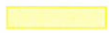
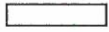





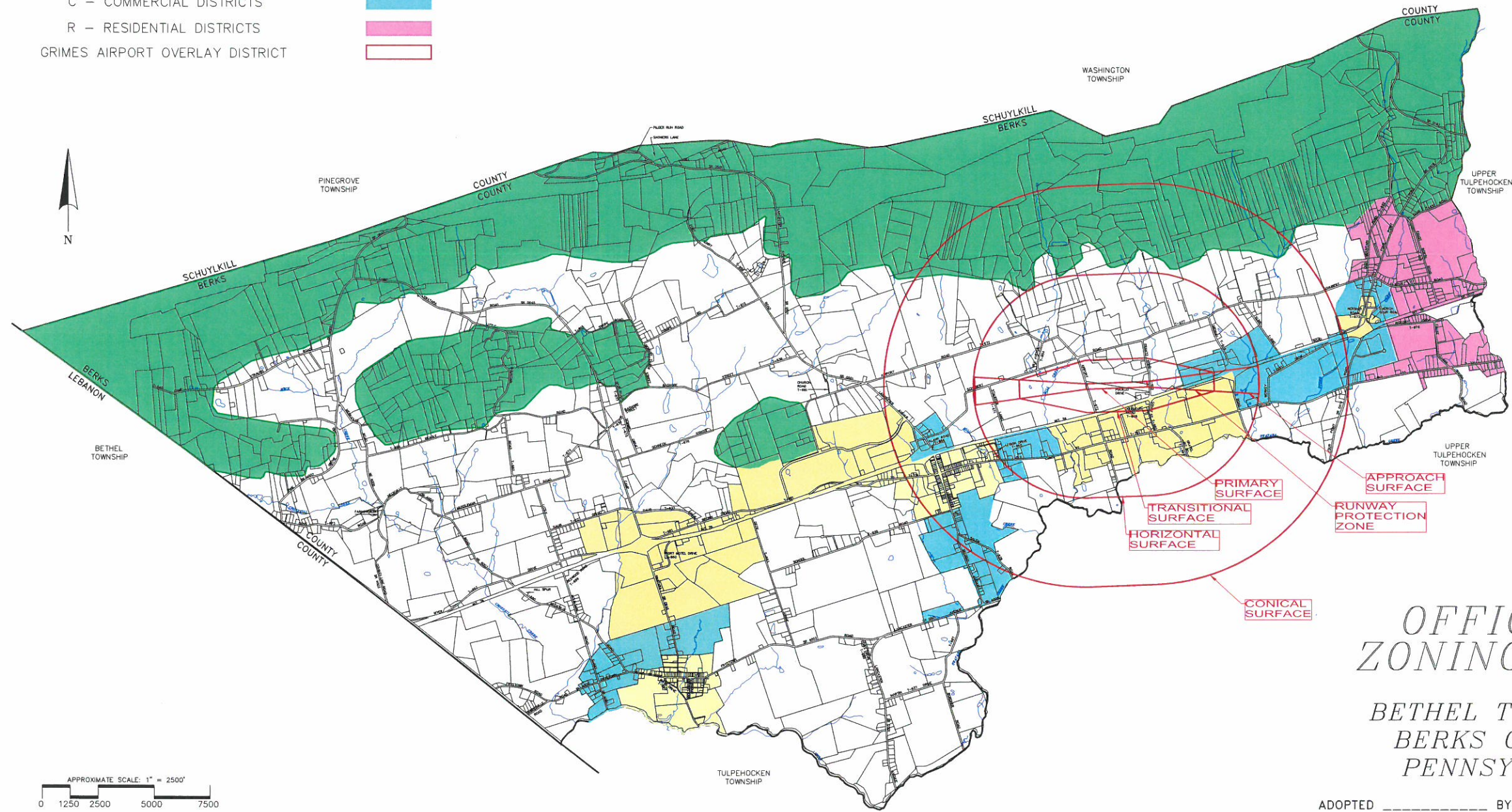


ZONING DISTRICT KEY	
V - VILLAGE DISTRICTS	
AP - AGRICULTURAL PRESERVATION DISTRICTS	
IC - INDUSTRIAL COMMERCIAL DISTRICTS	
EP - ENVIRONMENTAL PROTECTION DISTRICTS	
C - COMMERCIAL DISTRICTS	
R - RESIDENTIAL DISTRICTS	
GRIMES AIRPORT OVERLAY DISTRICT	



OFFICIAL ZONING MAP

BETHEL TOWNSHIP
BERKS COUNTY
PENNSYLVANIA

ADOPTED _____ BY ORDINANCE _____

ATTEST: _____

SESI
Steckbeck Engineering & Surveying Inc.
279 North Zions Mill Road / Suite A
Lebanon, Pennsylvania 17042
Phone: (717) 272-7110
Fax: (717) 272-7348